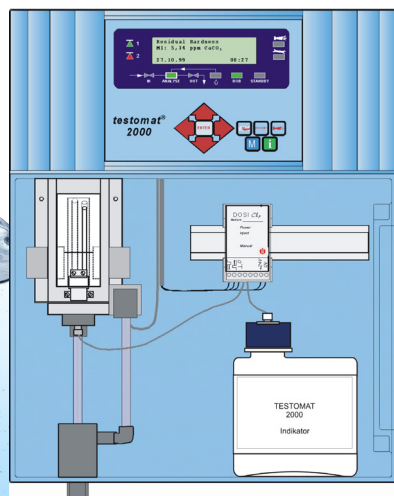


FUNCTIONAL OVERVIEW

TESTOMAT 2000®

- Quick menu navigation
- Background-illuminated LCD clear text display
- Programmable hardness unit in °dH, °f, ppm CaCO₃, mmol/l
- Accurate titration via piston-dosing pump
- Reliable low maintenance operation
- Minimum indicator and water consumption
- Two adjustable limit values with programmable switch functions
- Monitoring of two measuring points
- Programmable additional program (e.g. to switch on a cooler or for an analysis message)
- Output for alarm and maintenance messages
- Error documentation (e.g. low water)
- Monitoring of the filter capacity
- Indicator storage bottle 500 ml for extended operating periods



COMPANIES OF THE HEYL NETWORK

Germany

**Gebrüder Heyl Vertriebsgesellschaft
für innovative Wasseraufbereitung mbH**
www.heylnemeris.de
Phone: +49 (0) 51 21 76 09 0
Fax: +49 (0) 51 21 76 09 44
Email: vertrieb@heylnemeris.de

France

Heyl Analysis Technologies
www.hey-at.com
Phone: +33 (0) 1 69 46 17 17
Fax: +33 (0) 1 69 46 17 40
Email: contact@hey-at.com

The Netherlands

Pro Water B.V.
www.prowater.nl
Phone: +31 (0) 74 2 91 51 50
Fax: +31 (0) 74 2 91 53 50
Email: info@prowater.nl

USA

Heyl Brothers North America L.P.
www.heylbros.de
Phone: +1 (0) 312 377 61 23
Fax: +1 (0) 312 644 07 38
Email: USA@heylanalysis.de

Switzerland

BWT AQUA AG
www.bwt-aqua.ch
Phone: +41 (0) 61 755 88 99
Fax: +41 (0) 61 755 88 90
Email: info@bwt-aqua.ch

Production and Development

**Gebrüder Heyl Analysentechnik GmbH &
Co. KG**
www.heylanalysis.de
Phone: +49 (0) 51 21 2 89 33 0
Fax: +49 (0) 51 21 2 89 33 67
Email: info@heylanalysis.de

Flyer Testomat 2000 GB 210826

TESTOMAT 2000®

THE TESTOMAT 2000® RANGE –
An Unparalleled Instrument Generation!



GEBRÜDER HEYL
Analysentechnik GmbH & Co. KG
Water is our Element

PERFORMANCE FEATURES

OVERVIEW OF TESTOMAT 2000®

Testomat 2000® is a robust online field measuring instrument for the quality control of water treatment plants. It can be used in numerous areas where water hardness needs to be checked.

These include, for example:

- Steam generators in boiler houses
- Reverse osmosis plants
- Water treatment plants
- Well water / Drinking water providers

Testomat 2000® is TÜV certified for use in boiler houses.



In accordance with
TRD 604 Part 2

A simple quality-dependent softening plant can be additionally operated when using external control units (e.g. Softmaster® MMP1 or Softmaster® MMP2).

The simple conceptual design of Testomat 2000® also enables the measurement of other parameters in water, e.g. carbonate hardness, p-values, and minus-m values.

Thanks to the Testomat 2000® instrument range, the scope of application now includes, e.g.:

- Osmosis plants (hardness and chlorine)
- Electroplating (chromate and chrome VI)
- De-ironing plants (iron)
- Pharmaceutical industry (instruments suitable for calibration)
- Swimming pools (free and total chlorine)

And many more applications (please refer to the catalog).

PLUG-IN CARDS

FOR COMPREHENSIVE FUNCTIONS

Plug-in card for long-term data storage



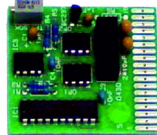
Use the SD Card Data Logger to save measuring results and error messages for up to 10 years.

Plug-in card for current interface SK 910



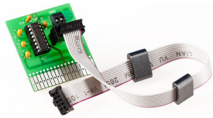
Add a 0–20 mA or 4–20 mA analog current output to Testomat 2000®.

Plug-in card for voltage interface UK 910



Add a 0–10 V or 2–10 V voltage output to Testomat 2000®.

Plug-in card for interface card RS 910



Connect Testomat 2000® to a log printer via the RS232 serial interface.



Scan the code and
visit us on our website!

TECHNICAL DATA

OF TESTOMAT 2000®

Power supply: 24/115/230 VAC, 50 - 60 Hz
Instrument protection 230 V: T0,1 A
Instrument protection 115 V: T0,2 A
Instrument protection 24 V: T1,0 A

Power consumption: max. 30 VA, without external load

Protection class: I

Degree of protection: IP 65

Conformity: EN 61000-6-2,
EN 61000-6-4, EN 61010-1

BS EN 610-6-4+A1, BS EN
61000-6-2, BS EN 61010-1+A1



Ambient temperature: 10 – 45 °C

Measuring range: Determinable measuring of total hardness, (water hardness), carbonate hardness, minus m-value, p-value via indicator selection

Current interface: 0/4 – 20 mA, max. load 500 Ohms

Dimensions: W x H x D = 380 x 480 x 280 mm

Weight: approx. 9.5 kg

The instrument is non volatile.

Mains water supply

Operating pressure: 1 to 8 bar or 0.3 to 1 bar (after removing of the valve body out of the regulator/filter housing)

Water temperature: 10 – 40°C

Water inlet: Opaque hose with 6/4x1 mm external diameter

Water outlet: Hose with an internal diameter of