



2-electrodes conductivity probe

SOE5 screw-in probes without temperature sensor
(article no. 310004)

SOE5/PT100 screw-in probes with temperature
sensor (article no. 310126)

Introduction

Follow these instructions when installing, operating, or servicing the product.

Measuring Range

Measuring range: 5 – 10 000 $\mu\text{S}/\text{cm}$

Cell constant: 0,5/cm

(Depending on the production conditions, the cell constant can deviate by $\pm 10\%$ from the nominal value. This deviation can be compensated at the transmitter.)

Technical Data

Maximum medium temperature: 130°C (266°F)

Maximum pressure: 6 bar (6×10^5 Pa)

Electrical connection: angle plug connector according to
DIN EN 175301-803 (replace for DIN
43650)

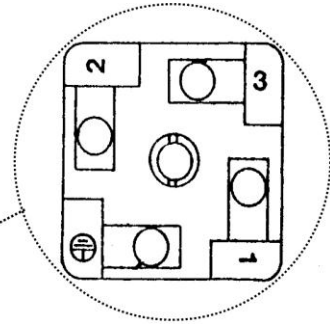
Process connection: external thread R $\frac{3}{4}$

Electrodes: stainless steel V4A, 1.4571

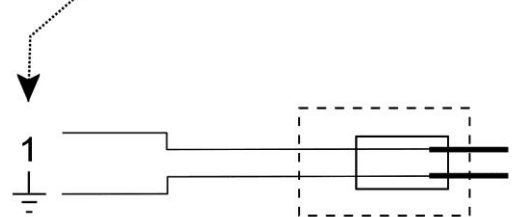
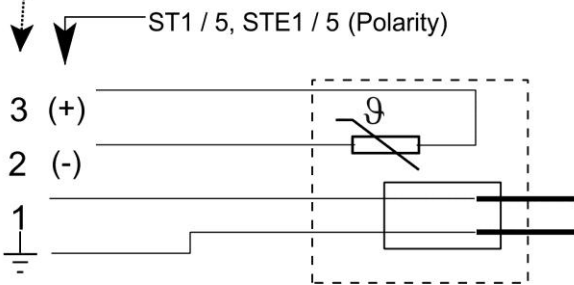
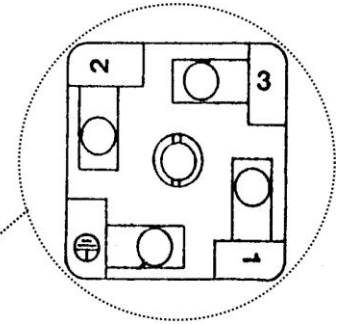
Housing: stainless steel V4A, 1.4571

Dimensions and connections

Type:
 ST1 / 5 / 10
 STE 1 / 5
 ST1 / 5 / 10 PT100
 STE1 / 5 PT100



Type:
 SO1 / 5 / 10
 SOE 1 / 5



SOE 1 SOE 5
STE 1/PT100 STE 5/PT100

