

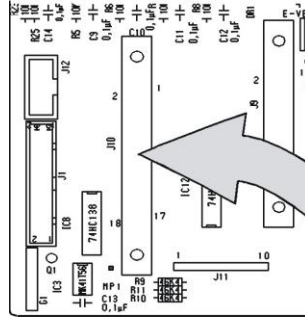
## Additional instructions

### Installing the interface cards SK910/UK910 (only Testomat 2000®)

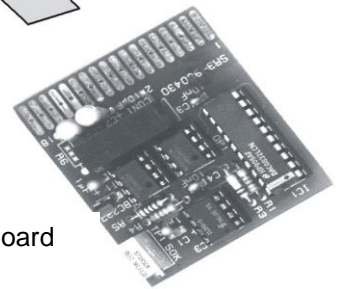
Avoid static charges during installation!

Personnel responsible for installation must be appropriately trained and qualified!

1. Switch off the instrument.
2. Insert the plug-in circuit board into the left-hand slot with the component side on the left. (Contact no.1 is at the top)
3. Switch on Testomat 2000®.
4. Program the desired type of current (0/4-20mA) (for SK910).



Base circuit board Testomat



Plug-in circuit board SK910/UK910

SK910\_Zusatz\_GB150512  
Art.No. 48950

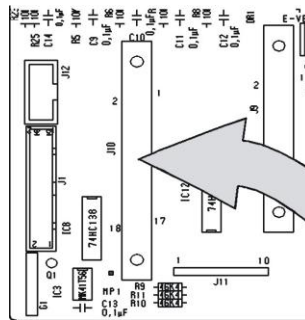
## Additional instructions

### Installing the interface cards SK910/UK910 (only Testomat 2000®)

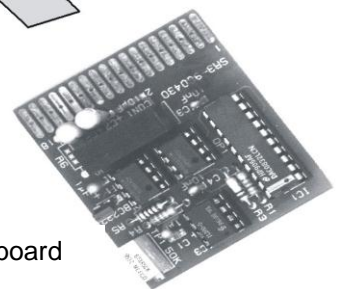
Avoid static charges during installation!

Personnel responsible for installation must be appropriately trained and qualified!

1. Switch off the instrument.
2. Insert the plug-in circuit board into the left-hand slot with the component side on the left. (Contact no.1 is at the top)
3. Switch on Testomat 2000®.
4. Program the desired type of current (0/4-20mA) (for SK910).



Base circuit board Testomat



Plug-in circuit board SK910/UK910

SK910\_Zusatz\_GB150512  
Art.No. 48950